

**Featu
res**

2023 Excellence in Construction Award Winners



COMMERCIAL LESS THAN \$5 MILLION



Harrison Construction Co. Inc.

Advantage Center – Tuscaloosa, Alabama

The Advantage Center addition for student athletes was an extraordinary project that required teamwork and dedication from all parties involved to complete in the four-month schedule. The 2,900-square-foot addition consisted of installing a digital ticker announcing the latest news in athlete deals; a studio with a green screen to provide athletes a place to shoot NIL (name, image and likeness) related video; a wall dedicated to Alabama player NIL deals; and a meeting space to help facilitate brand-and-athlete relationships. The project encompassed immaculate, high-level finishes including, but not limited to, linear lights, resinous wall and ceiling panels, acoustical sound panels, sliding glass office fronts and intricate graphics throughout. The coordination exercised between the owner, architect and contractors was extensive, with an extraordinary result.



COMMERCIAL \$10 MILLION TO \$25 MILLION



BL Harbert International

Oral Surgical Institute, 500 28th MOB – Nashville, Tennessee

The Oral Surgical Institute Medical Office Building (MOB) sits on a triangular site located one block north of Nashville's

medical corridor on Charlotte Avenue. The Medical Office Building is a four-story, 45,000-square-foot, Class AA facility with private amenity decks with views of downtown, ample patient/staff parking and a separate patient pickup area.



COMMERCIAL \$50 MILLION TO \$100 MILLION

ROBINS & MORTON

Building With Purpose®

Robins & Morton

Redstone Gateway 8200 & 8300 – Huntsville, Alabama

Redstone Gateway buildings 8200 and 8300 are located in Huntsville, Alabama, within Redstone Gateway's 468-acre multiuse business complex. The project includes two build-to-suit office buildings and a parking garage, all completed against an aggressive project deadline for one of the nation's largest defense contractors. Together, the state-of-the-art, Class A tilt-wall buildings total 260,000 square feet, and each are five stories tall, featuring executive office space, program management and engineering design space, a 16,000-square-foot data center, a 350-person auditorium to facilitate classified program meetings, and a 144,000-square-foot parking garage with nearly 400 spaces.



ELECTRICAL COMMERCIAL LESS THAN \$2 MILLION



Premier Service Co.

*Tuscaloosa County Sheriff's Office –
Tuscaloosa, Alabama*

The new \$10 million Tuscaloosa County Sheriff's Office will house the department's patrol division, technical services division, evidence, records division and more. The new location will allow officers to respond more quickly to some emergency calls. The new facility will also allow officers to do their jobs better due to a better location and access to the newest technology. This modern law-enforcement office will provide a secure work environment for the men and women who serve and protect the citizens of Tuscaloosa and surrounding areas of the county. Premier Service Co. was the electrical contractor. Harrison Construction was the general contractor for the Tuscaloosa County Sheriff's Office.



ELECTRICAL COMMERCIAL \$2 MILLION TO \$10 MILLION



Marathon Electrical Contractors LLC *Grandview Surgery Center – Birmingham, Alabama*

The Grandview Surgery Center project is a first-floor buildout of the Grandview POB-II, located in Birmingham off Highway 280. The 35,000-square-foot buildout consisted of four ORs, a CT room, an MRI room, two procedure rooms, 12 critical care transport rooms, 12 pre/post rooms and a sterile processing area. The contract value of this project was \$2.65 million.



ELECTRICAL INDUSTRIAL \$2 MILLION TO \$10 MILLION



Marathon Electrical Contractors LLC *Buffalo Rock – Birmingham, Alabama*

Buffalo Rock purchased an 850,000-square-foot warehouse that had been vacant for more than 20 years with the intent of making it their distribution hub for Alabama. Work involved setting new poles and overhead lines to be connected to the Alabama Power source. Once this was complete, Buffalo Rock had control of their facility without affecting any other tenants.



ELECTRICAL OVER \$10 MILLION



Marathon Electrical Contractors LLC *Baptist Health Care Pensacola – Pensacola, Florida*

Marathon Electrical Contractors had the pleasure to assist with the Baptist Health Care Brent Lane campus in Pensacola, Florida, working as a subcontractor for Brasfield & Gorrie. Our scope included the entire electrical scope, and the fire alarm. We began work on this project in early 2021 and wrapped up the project in September 2023, and our total contract value was \$57,170,000. Marathon's peak labor on this project was 200 employees, utilizing both local electricians in the Pensacola/Gulf Coast area and Marathon employees from Birmingham,

Alabama. Our team was able to overcome multiple obstacles and post-COVID-19 material and labor delays to complete this project on time and turn over a quality product to the owner.



ENGINEER: CIVIL



Schoel Engineering Company Inc.

*University of Alabama at Birmingham (UAB)
Science and Engineering Complex, Phase I –
Birmingham, Alabama*

The new Science and Engineering Complex will replace its predecessor. This cutting-edge facility will support UAB's educational and research efforts, and contribute to the City of Birmingham's economic development by providing a launch pad for ideas and opportunities for growth. Phase I consists of the East Science Hall and the South Science Hall. Phases II and III will complete the project, making it a massive asset for the university. Phase I houses the biology, chemistry and physics departments.



ENGINEER: GEOTECHNICAL



Building & Earth Sciences Inc.

*UAB Science & Engineering Phase 1:
Geotechnical Engineering/Construction
Materials Testing/Special Inspections per
IBC – Birmingham, Alabama*

Building & Earth Sciences was selected to provide extensive geotechnical engineering consulting (including preliminary and final subsurface site investigations utilizing both site drilling sample collection and seismic refraction geophysical evaluation) in support of the design phase, as well as a broad range of materials testing and special inspections per International Building Code (IBC) services during construction of the first phase of a state-of-the-art \$76 million, 138,842-square-foot, multistory academic complex. Building & Earth Sciences was also retained by the university to provide the same services for the upcoming second phase of the complex.



EXTERIORS: MASONRY, PRECAST OR STONE

Selective Masonry, Inc.

Selective Masonry Inc.

Drummond Lyon Hall, The University of Alabama – Tuscaloosa, Alabama

The new Drummond Lyon Hall at the University of Alabama is an impressive 25,000-square-foot, four-story building located on Colonial Drive adjacent to Bryant Denny Stadium. Designed by Davis Architects to match neighboring Doster Hall, this remarkable building has veneer components of facebrick, limestone and architectural precast. The state-of-the-art facility is the new home for the Department of Clothing, Textiles and Interior Design and The Fashion Archive.



HEALTHCARE LESS THAN \$5 MILLION



Bailey-Harris Construction Co. Inc.

Lee Obstetrics and Gynecology – Auburn, Alabama

Bailey-Harris Construction Co. was able to fulfill the ever-growing demand for additional women's health, patient and physician space in the Auburn/Opelika area by concluding the Lee Obstetrics and Gynecology project ahead of schedule and under budget. The task consisted of renovating a second-floor shell space to hold 30 exam rooms, 10 offices, two procedure rooms, a blood-draw lab and three non-stress test rooms.



HEALTHCARE LESS THAN \$5 MILLION

ROBINS & MORTON

Building With Purpose®

Robins & Morton

Starr Regional Medical Center Catheterization Lab – Athens, Tennessee

Robins & Morton successfully completed the Starr Regional Medical Center Cardiac Catheterization Lab in rural Athens, Tennessee. The \$5.4 million cardiac catheterization lab and interventional cardiology program means greater access to life-saving heart care for the area. The 2,500-square-foot structural steel addition is adorned with a brick and glass storefront veneer. It also includes a nurses' station, cath lab

director's office, recovery room, equipment room, control room, bathroom, locker room and viewing room. Despite the size, turning the project into a reality was no small task. The Robins & Morton team had to contend with a harsh East Tennessee winter, lengthy procurement delays that threatened the fast-tracked schedule, and a unique design that incorporated an existing drive-thru canopy. Robins & Morton used an unconventional approach to scheduling to overcome procurement delays and a small area for laydown. The team's commitment to the patient experience meant working nights and weekends to limit the disruptions to the adjacent outpatient services. Despite the challenges associated with the project, Robins & Morton successfully completed the project in February 2023. With the facility now fully operational, members of the Athens community no longer have to travel to Knoxville or Chattanooga for cardiac catheterization care.



HEALTHCARE \$5 MILLION TO \$10 MILLION

ROBINS & MORTON

Building With Purpose®

Robins & Morton

*Huntsville Plastic Surgery – Huntsville,
Alabama*

Robins & Morton built Huntsville Plastic Surgery, a new two-story, 13,200-square-foot surgery center located in one of the newest up-and-coming districts in the southeastern part of the city. The facility includes two operating rooms, six recovery rooms and 10 exam rooms. Huntsville Plastic Surgery is the only plastic surgery center in Alabama to have

a certificate of need, enabling the center to perform both cosmetic surgery and surgery covered by insurance. With the ability to provide a greater range of services — along with higher levels of privacy and convenience — this state-of-the-art surgery center provides a valuable option for patients in need of plastic surgery in Alabama. Robins & Morton was the general contractor for Huntsville Plastic Surgery. Fuqua & Partners Architects served as the architect.



HEALTHCARE \$10 MILLION TO \$25 MILLION

ROBINS & MORTON

Building With Purpose®

Robins & Morton

*Patricia Neal Rehabilitation Hospital West –
Knoxville, Tennessee*

A new rehabilitation hospital in Knoxville, Tennessee, now serves patients recovering from strokes, brain and spinal cord injuries, amputations, and other complex orthopedic conditions. The 51-bed facility includes all-private patient rooms, a therapy gym and courtyard, an activities of daily living suite, a cafeteria and two dayrooms. The project was led by general contractor Robins & Morton, and the process included complex site development, planning and logistics.



HEALTHCARE \$25 MILLION TO \$50 MILLION



MJ Harris Construction Services LLC

*Rehabilitation and Critical Care Hospital of the Black Hills
– Rapid City, South Dakota*

This new one-story hospital provides 36 rehabilitation beds as well as 18 long-term acute care beds. The hospital is operated by a joint venture partnership between Monument Health and Vibra Healthcare, an industry leader that operates 29 long-term acute care and rehabilitation hospitals nationwide.



HEALTHCARE \$50 MILLION TO \$100 MILLION



Hoar Construction

Hoar Construction

*Covenant Hospital Hobbs – Hobbs,
New Mexico*

The Covenant Hospital Hobbs is a 109,000-square-foot, three-story, 60-bed acute care facility that includes four operating rooms and a patient tower, imaging, lab, emergency department, intensive care unit, and dedicated women's center offering labor and delivery, obstetrics and mammography services. This new facility replaces the existing regional medical center, becoming the area's largest hospital servicing the surrounding community.



HISTORICAL RESTORATION LESS THAN \$5 MILLION

ROBINS & MORTON

Building With Purpose®

Robins & Morton

*Wofford College Blackwell-Quattlebaum
Center for Wellness and Counseling Services
Restoration – Spartanburg, South Carolina*

Robins & Morton collaborated with a restorative architect, college administrators and a host of specialty trade contractors to bring Wofford College's Hugh R. Black House back to its historical roots. Along the way, the project team carefully restored the historical structure's 33 original windows, exterior and interior brick walls and interior wood floors, while adding modern

amenities in support of the Blackwell-Quattlebaum Center for Wellness and Counseling Services.



HISTORICAL RESTORATION \$5 MILLION TO \$15 MILLION



The Stewart/Perry Company *Nextec – Birmingham, Alabama*

Located in Birmingham's new "Switch" district, the Nextec Building is poised to be a catalyst for change in downtown Birmingham. Through a public/private partnership, Stewart/Perry renovated the old Edwards Chevrolet Building, a long-abandoned 1920s landmark, into a hub for emerging technology businesses. Nextec was imagined for graduates of the nearby Innovation Depot and other small businesses, including nonprofits, that might need an incubator-style boost to take their startups to the next level. The result is a space to settle, encouraging these businesses to stay in downtown Birmingham, all while stimulating the economy in the city's northwest quadrant.



INDUSTRIAL \$5 MILLION TO \$15 MILLION



Jim Cooper Construction Company Inc. *Calera Commerce Park – Calera, Alabama*

The Calera Commerce Project is a 216,320-square-foot spec warehouse in Calera, Alabama. Located on 18 acres with two detention ponds, the building is suited to accommodate a variety of tenants and houses a total of 40 dock doors.



INDUSTRIAL \$15 MILLION TO \$25 MILLION

**RADERMcCARY****RADERMcCARY INC.***Crossroads Commerce Center – Birmingham, Alabama*

Crossroads Commerce Center consisted of two 186,000-square-foot warehouse buildings. Tilt-wall construction was used to fast-track the project and bring three new tenants online in Birmingham in a matter of 15 months.

**INDUSTRIAL \$25 MILLION TO \$50 MILLION****Gray***Cerrowire MC Cable Manufacturing Facility – Hartselle, Alabama*

Cerrowire's new production plant in Hartselle, Alabama, is a 270,000-square-foot greenfield facility that manufactures metal-clad cable for residential, commercial and industrial customers. Gray executed pre-construction and design-build services, delivering the facility in 11 months.



INFRASTRUCTURE HEAVY



Brasfield & Gorrie LLC

Dearborn Diversion Project – Upstate South Carolina
(Confidential Location)

Brasfield & Gorrie was selected for this diversion project that consists of two diversion dam structures that create a reservoir. An in-river recreational whitewater area was created downstream from the Long Bypass Reach diversion dam. One of only a few in the country, this unique concrete structure directs the river through switchbacks and channels to create whitewater for recreational activities. A pneumatic Obermeyer Spillway Gate system was installed at the short bypass reach location.



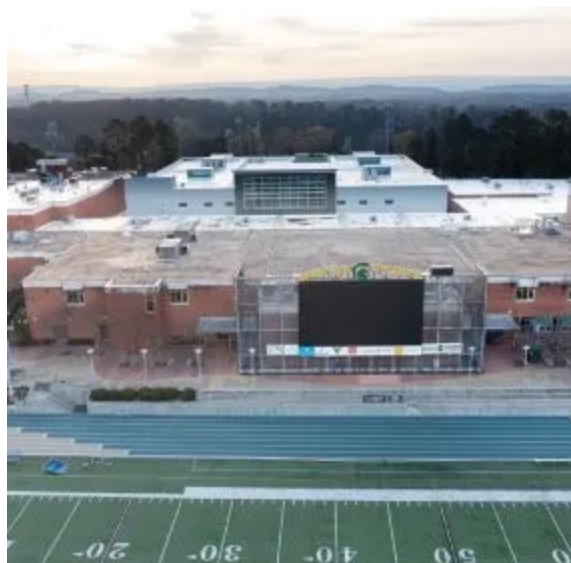
INSTITUTIONAL \$5 MILLION TO \$10 MILLION



Harrison Construction Co. Inc.

Bryce Lawn Tornado Shelter – Tuscaloosa, Alabama

The Bryce Lawn Tornado Shelter consists of a one-story, 14,869-square-foot building. The building will serve as a Federal Emergency Management Agency (FEMA)-rated storm shelter for the northeast portion of the campus. In addition to being a storm shelter, it will also function as an event hall to be utilized by Greek student organizations. The facility is equipped with state-of-the-art audio and visual equipment as well as an elevated stage for entertainment.



INSTITUTIONAL \$10 MILLION TO \$25 MILLION

STONE

Stone Building Company

Mountain Brook High School – Mountain Brook, Alabama

The Mountain Brook High School project was a renovation and addition to the existing school, which was completed in two separate phases over 21 months. The first phase included the demolition of two academic wings and construction of a 70,000-square-foot, two-story addition consisting of state-of-the-art classrooms, conference rooms and administrative spaces. Upon completion and move-in of the first phase, the 18,000-square-foot second phase commenced and included the demolition and renovation of one academic wing and construction of new band practice rooms, a dance studio and an administrative suite.



INSTITUTIONAL \$25 MILLION TO \$50 MILLION

STONE

Stone Building Company

Bill Noble Park – Gardendale, Alabama

The Bill Noble Park project was a \$32,697,243 lump-sum project for the City of Gardendale that included the full demolition of an existing park. The park is approximately 40 acres and required approximately 300,000 cubic yards of dirt to be moved, including 150,000

cubic yards of rock. The new park includes nine turf ballfields, a turf football field, eight tennis courts, 11 pickleball courts, a state-of-the-art playground, three concessions stands, eight pavilions, and an office and community building for the Gardendale Parks and Recreation personnel. The project was delivered to the City of Gardendale after 13 months of construction, which was the contractual duration agreed upon prior to construction beginning. Bill Noble Park has activities for all ages and is something that the City of Gardendale can be proud of and enjoy throughout all months of the year. It will also bring revenue to the City of Gardendale through its use during weekend tournaments and through pavilion rentals throughout the week.



INSTITUTIONAL \$50 MILLION TO \$100 MILLION



Rabren General Contractors LP

*Auburn University Football Performance Center –
Auburn, Alabama*

New construction of a 233,400-square-foot overall facility, consisting of a 138,100-square-foot football operations building, a 95,300-square-foot indoor practice facility and two full-sized, natural-turf football practice fields on a 12-acre site. The center is located on the campus of Auburn University and is used as the home of its NCAA Division I Football Program. The facility features the administrative offices for the football operations program, including coaches' offices and support staff space. In

addition to practice facilities, it has a 25,000-square-foot weight room, sports medical facilities and recovery amenities that include multiple pools, a state-of-the-art locker room, a game footage review theater, nutrition, flexible dining facilities, event space and more to support the football program initiatives. In addition, this facility includes high-end finishes, featuring a glass atrium dedicated to the history and tradition of the program, and the latest technology available, including advanced video systems, and a players' lounge.



INTERIORS: ACOUSTICAL, DRYWALL, MILLWORK

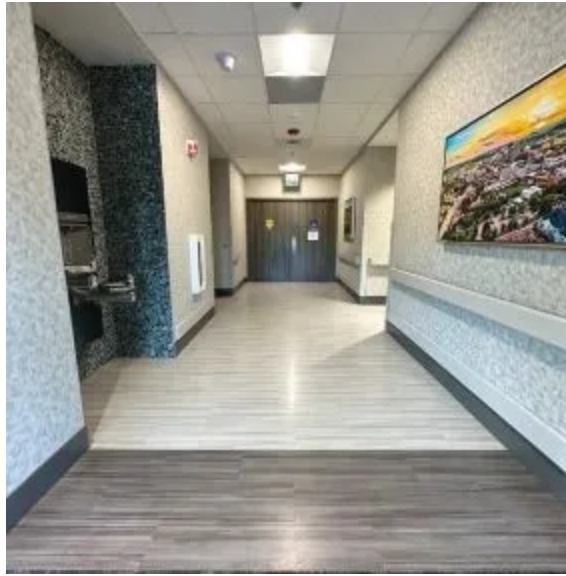


Remmert & Company

AU Rane Culinary Science Center – Auburn, Alabama

Rane Culinary Science Center is at Auburn University and was a five-diamond finish project — the only five-diamond finish in the state of Alabama. Nearly everything we provided and installed was a custom product (meaning it had added intricacies to our products). This project had nine different stain colors. Everything was high end including the TVs, mirrors, lighting fixtures, etc. Our installation team had to work around decorations that were delicate, such as wine bottles, which provided more of a challenge to our team.

Photo credit: Jonathan Hillyer Photography Inc.



INTERIORS: OTHER



Southern Carpet, Hardwood & Tile Inc.

Patricia Neal Rehabilitation Hospital – Knoxville, Tennessee

The Southern Carpet, Hardwood & Tile team completed the interior finishes of the Patricia Neal Rehabilitation Hospital.

Located in Knoxville, Tennessee, the Patricia Neal Rehabilitation Hospital is a single-level structure, though it encompasses a large footprint of 51,000 square feet of total space in order to house the many superior amenities and therapies needed at an Encompass Health facility. Our team took extensive measures to safeguard the quality of the work being performed, which included 5,700 square feet of carpet, 36,000 square feet of resilient flooring, 3,800 square feet of sheet vinyl, 7,500 linear feet of rubber base and 5,500 square feet of porcelain floor and wall tile. We are proud to share that we succeeded in our goal of turning over a beautifully finished interior space — both on time and on budget — to a happy and satisfied client that was then able to quickly begin welcoming patients in need of care.



MECHANICAL COMMERCIAL LESS THAN \$2 MILLION



Premier Service Co.

The Crossings at North River (HVAC) – Northport, Alabama

Premier Service Co.'s Electrical and HVAC divisions teamed up with Rabren General Contractors to build The Crossings at North

River in Northport, Alabama. The Crossings is a 214,000-square-foot senior living facility. The facility includes 94 independent living, 76 assisted living and 32 memory care units that make up the four interconnected buildings with four floors each. There are numerous amenity spaces throughout the building for residents to enjoy along with a central living room, a grand dining room, an activity room and outside courtyards for each of the independent living, assisted living and specialty care areas. Other amenity spaces include a theater, pub, bistro, salon, library, and exercise, physical therapy and card/game rooms. The Crossings is forward-thinking senior housing with you in mind.



MECHANICAL COMMERCIAL \$2 MILLION TO \$10 MILLION



Trinity Contractors

Brookwood Baptist Medical Center Main Operating Rooms Addition – Homewood, Alabama

Selected by Robins & Morton for the Brookwood Baptist Medical Center operating room addition and renovation, located in Homewood, Alabama, Trinity Contractors was granted the opportunity of completing all installation, system adjustment and balancing, and renovation of existing mechanical systems, including seismic bracing.



MECHANICAL OVER \$10 MILLION



Comfort Systems USA – Mid South

New UA Tutwiler Residence Hall – Tuscaloosa, Alabama

The new University of Alabama Tutwiler Residence Hall is the dormitory that was built to replace the existing Tutwiler dorms. When completed, this was the largest college dormitory in the state of Alabama. Comfort Systems USA – Mid South performed the mechanical (HVAC and plumbing) for the entire project. The project site is adjacent to the south end of Bryant-Denny Stadium.



MEGA PROJECTS: FEDERAL GOVERNMENT OVER \$100 MILLION



BL Harbert International

New U.S. Embassy – Ankara, Turkey

The new U.S. Embassy project in Ankara is a multibuilding compound in the Karakusunlar neighborhood of Ankara. Inspired by Turkish architectural traditions, the landscape and architecture are organized around a series of interior and exterior courtyards, which progress from formal and representational to private and casual. With 25 meters of grade change across the site, the experience of courtyards and gardens creates a layered integration of landscape and building. Together, they provide unique spaces designed to meet the diplomatic community's varied needs while creating a sense of unity across the site.



MEGA PROJECTS: HEALTH CARE OVER \$100 MILLION



Brasfield & Gorrie LLC

*Baptist Health Care, Brent Lane Campus –
Pensacola, Florida*

Brasfield & Gorrie was selected as the general contractor to build Baptist Health Care's new full-scale health campus on a 57-acre site in Pensacola, Florida. The state-of-the-art facilities will include a new 10-story, 264-bed hospital; a six-story, 178-square-foot medical office building; a 48,000-square-foot behavioral health hospital; and a 23,000-square-foot central energy plant. The campus will provide greater convenience, increased efficiency and the latest health care technology to serve the Pensacola community.



OTHER CONSTRUCTION LESS THAN \$5 MILLION



Rives Construction

Fanny Goldmine Diner – Alexander City, Alabama

Fanny Goldmine Diner is a Lake Martin staple, combining modern and classic styles. Rives constructed the restaurant’s interior and exterior dining spaces, which included a courtyard and pavilion. The diner’s rustic exterior features natural stone and cedar timbers to match nearby log cabins and other structures at Russell Crossroads.



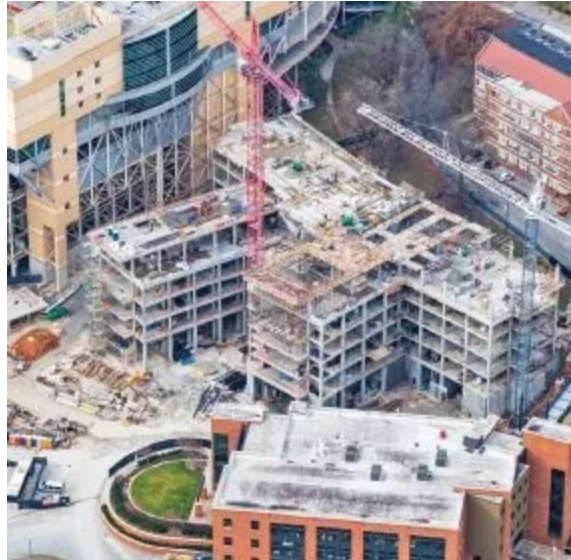
OTHER SPECIALTY LESS THAN \$10 MILLION



Fravert Services

Modera Old Ivy – Atlanta, Georgia

Modera Old Ivy is a luxury high-rise apartment community in Atlanta, Georgia. It was developed by Mill Creek Residential.



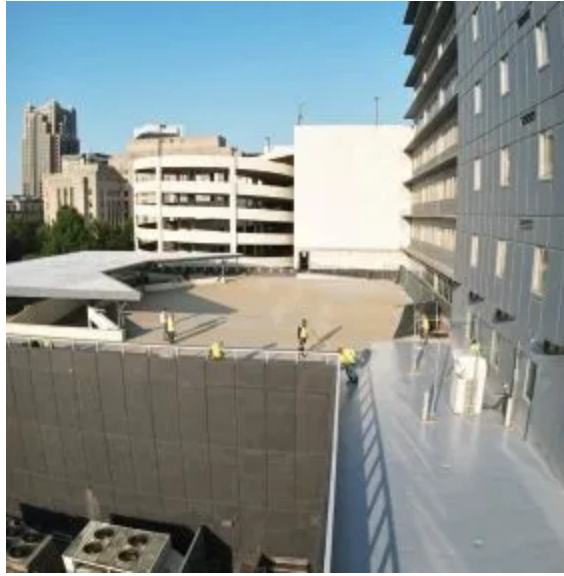
OTHER SPECIALTY OVER \$10 MILLION



Ard Contracting Inc.

*University of Tennessee Zeanah Engineering Complex
– Knoxville, Tennessee*

Ard Contracting met all owner, construction manager, and designer requirements during construction of the 228,000-square-foot, seven-story structural concrete frame. Project challenges included construction of the Fast Neutron Source shielded vault, which required controlling the heat of hydration as the 5-foot, 6-inch-thick structural concrete cured. Ard Contracting completed the structure in 38 weeks, worked 143,000 man-hours, and poured 22,000 cubic yards of concrete.



OTHER SPECIALTY: COMMERCIAL LESS THAN \$5 MILLION

**BRAWCO Inc.*****2121 Building Rehabilitation: Phase 4 Parking Deck Repairs – Birmingham, Alabama***

BRAWCO was contracted to complete a total renovation of the 2121 Building parking deck, including 75,000 square feet of traffic coating on four levels, more than 100 cubic feet of concrete repair, all-new paint, a roof, light fixtures, signage, security gates and curtainwall. The fifth-floor mural will bring tons of interest to this renovation. The parking deck renovation is a part of a larger plan to convert this downtown corner into Class A office space.

**OTHER SPECIALTY: COMMERCIAL \$5 MILLION TO \$10 MILLION****C.S. Beatty Construction Inc.*****The Bray at Liberty Park Phase II Mass Grading – Vestavia Hills, Alabama***

C.S. Beatty Construction has performed numerous projects in Liberty Park, and the phase II mass grading project was another challenging undertaking. The 47 acres of disturbed land will eventually be home to retail, restaurants, office space and single-family homes. Our team battled the hard rock material at the site to move more than 650,000 cubic yards in a cut-to-fill operation. We installed 16,461 linear feet of storm sewer pipe, sanitary sewer pipe and water piping throughout the project. The final touches on the project included fine

grading 254,366 square yards, paving 30,193 square feet and installing 12,880 linear feet of 18-inch curb and gutter. The inclusion of green spaces throughout the project will make this project a gem in the Liberty Park community.



OTHER SPECIALTY: FEDERAL GOVERNMENT LESS THAN \$10 MILLION



Tusco Inc.

Rome Air Force Research Laboratory: Site No. 1 Anti-Terrorism Perimeter Security & Entry Control Facility – Rome, New York

Tusco Inc. was contracted by Four Tribes Enterprises to install physical and electronic security features at Site No. 1 of the Rome Air Force Research Laboratory (AFRL). The primary purpose of the project was to provide a secure perimeter and a controlled access point to better protect the critical and classified research that takes place at the site.



OTHER SPECIALTY: INDUSTRIAL LESS THAN \$10 MILLION



C.S. Beatty Construction Inc.

Port of Epes Industrial Park Dredging – Epes, Alabama

The Port of Epes Industrial Park dredging project was performed by C.S. Beatty Construction to provide support for the construction of a new \$175 million wood pellet production plant. Our team moved more than 100,000 cubic yards of material to construct a holding pond that will accept material from the Tombigbee River. The material is being removed from the river so that a port can be constructed for the new wood pellet manufacturing facility. The material was removed by dredging from the new port and then pumping the material over 2,000 linear feet, across significant elevation changes, to the

holding pond. The construction of the pond itself was challenging due to the unique chalky clay material we were working with. Our team had to wet the material and walk over it to break it into the smaller sizes needed to construct the holding pond.



OTHER SPECIALTY: INSTITUTIONAL LESS THAN \$10 MILLION



C.S. Beatty Construction Inc.

Homewood High School South Parking Lot Expansion – Homewood, Alabama

The Homewood High School south parking lot expansion project was performed by C.S. Beatty Construction to add 83 parking spaces to the campus of Homewood High School. The challenge for our team was to tie the new parking lot to existing parking lots, with significant grade changes across the project. The 3-acre project included 851 linear feet of storm sewer installation as well as putting in two underground detention ponds. A major aspect of the project was constructing four retaining walls that covered more than 7,300 square feet. The project timeline was on an aggressive schedule over the summer months while school was not in session.



RENOVATION LESS THAN \$4 MILLION



MJ Harris Construction Services LLC

*Encompass Health Rehab Hospital of Cincinnati Norwood
Dialysis Unit – Norwood, Ohio*

Renovation of an existing space into a new dialysis suite in the hospital, which included four new beds. The hospital is owned by Encompass Health, which owns more than 150 hospitals in the United States and Puerto Rico.



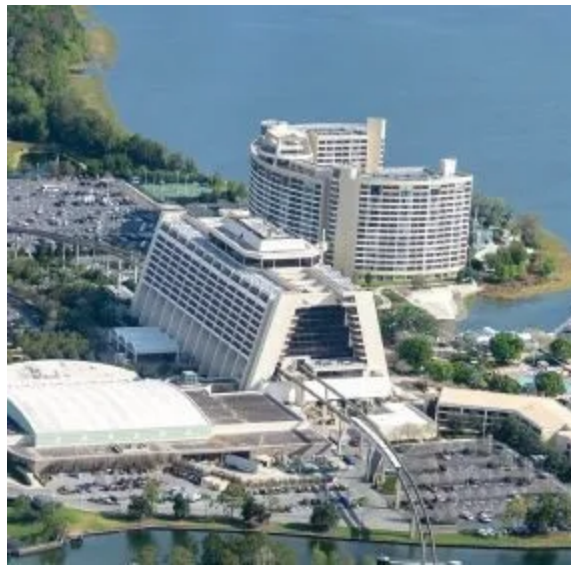
RENOVATION \$4 MILLION TO \$10 MILLION



Rives Construction

Audi Nashville – Nashville, Tennessee

This project was a renovation of an existing building in an urban setting. An existing pre-engineered warehouse was adapted for use as a new Audi service center, showroom and delivery center. Exterior improvements included new exterior skin, windows and roofing. Interior changes included a new shop, parts storage, showroom and offices. New site improvements included new parking and landscaping.



RENOVATION \$10 MILLION TO \$100 MILLION



HoarConstruction

Hoar Construction

Disney's Contemporary Resort Room Renovation – Lake Buena Vista, Florida

A “new room” and full bathroom renovation for 655 keys at Walt Disney's iconic Contemporary Resort — with complete interior demolition, abatement and remodel of the typical guest rooms, suites, concierge lounge and corridors at Disney's Contemporary Tower and the South Garden Wing. Renovations included reconfigurations of new walls, new drywall, floor finishes, bathrooms, MEPF upgrades and a revamp of the exterior balconies. This scope was inclusive of the 270 typical guest rooms plus 12 suites in the South Garden

Wing buildings on floors one through three, and the 357 guest rooms plus 12 suites in the recognizable Tower building on floors five through 14. The rooms are accessed from an interior corridor, and the work took place on a rolling schedule by pod for the South Garden Wing and a rolling schedule for the entire Tower structure. Guest rooms were offline in the tower during construction; however, the restaurants, including California Grille on the top floor, remained fully operational. Total square footage was 265,000.



RESIDENTIAL/MULTIFAMILY LESS THAN \$10 MILLION



RADERMcCARY

RADERMcCARY INC.

Theatre Lofts – Birmingham, Alabama

Throughout the design and construction of Theatre Lofts, historic elements were accounted for, including refinishing existing hardwood floors, using exposed brick, renovating historic windows and reusing custom beadboard ceilings. No detail was forgotten in updating and reviving the beauty of the 1900s buildings.



RESIDENTIAL/MULTIFAMILY \$25 MILLION TO \$50 MILLION



BL Harbert International

Portico at Perdido – Perdido Key, Florida

Classified as modern beachfront luxury, Portico at Perdido is home to 27 exclusive and expansive boutique condominium residences. It sits on a quiet stretch of beach between two nature reserves, Perdido Key State Park and Gulf Islands, and provides great views of the park, the Intracoastal Waterway and other Perdido Key natural assets. With wide floor plans and spacious outdoor living spaces, Portico at Perdido boasts the privacy/luxury of uncrowded beaches, stunning vistas and impressive amenities. Each of the beachfront residences offers floor plans that range from 2,469 square feet to 3,049 square feet and lavish custom

amenities, including a Gulf-front infinity-style pool with stunning views, covered poolside lounge area, Gulf-front heated indoor pool, Gulf-front fitness center, owner storage at the beach level for convenience, expansive outdoor terraces, secure parking and building entry, and much more.



RESIDENTIAL/MULTIFAMILY \$50 MILLION TO \$100 MILLION



Doster Construction Company

The Porte at Pathstone – Pensacola, Florida

Doster completed construction on The Porte at Pathstone, a 336-unit apartment complex in Pensacola, Florida. The 336 units were developed in seven four-story apartment buildings. Site amenities include a clubhouse, pool and maintenance building.



SITWORK/LANDSCAPE/HARDSCAPE LESS THAN \$2 MILLION



Owens Landscape Group

Bill Noble Park – Gardendale, Alabama

Owens Landscape Group’s execution of Bill Noble Park’s multifaceted scope included native plant gardens, irrigation innovation and balanced terrain adaptation. Overcoming challenges like drainage and weather disruptions, the team was dedicated to creating an environment reflective of the City of Gardendale’s vision.



SITWORK/LANDSCAPE/HARDSCAPE \$2 MILLION TO \$10 MILLION



C.S. Beatty Construction Inc.

Church of the Highlands Alabaster Campus – Alabaster, Alabama

C.S. Beatty Construction proudly continued our relationship with Church of the Highlands by providing sitework for their new 800-seat Church of the Highlands Alabaster Campus. Substantial settlement was observed by third-party testing on the challenging site after our initial grading activities. The site was completely redesigned after this discovery, with the main building being moved to a new location on the site. Settlement was again discovered after new plans were issued, so a third move of the building location was made. Our team then provided remediation of the subsurface with grout to solidify the foundation due to the geotechnical challenges. The presence of a high-powered gas line through the middle of the project site compounded the complexity of our work. Church of the Highlands celebrated the opening of their new campus in August 2023.



SUPPLIER



Ready Mix USA

The Tony & Libba Rane Culinary Science Center – Auburn, Alabama

The Tony & Libba Rane Culinary Science Center, which opened in the fall of 2022, is the first of its kind in the

world — a five-star, five-diamond training hotel. The center includes 16 hotel rooms, 10 suites, six residences, a spa, a fitness center, a rooftop pool and a restaurant. The center is an educational facility that also houses a learning food and beverage facility, a coffee roastery and bar, a brewing science lab and a wine appreciation center. While these spaces will serve as educational resources for students, guests are welcome to spectate and enjoy everything these learning spaces have to offer.